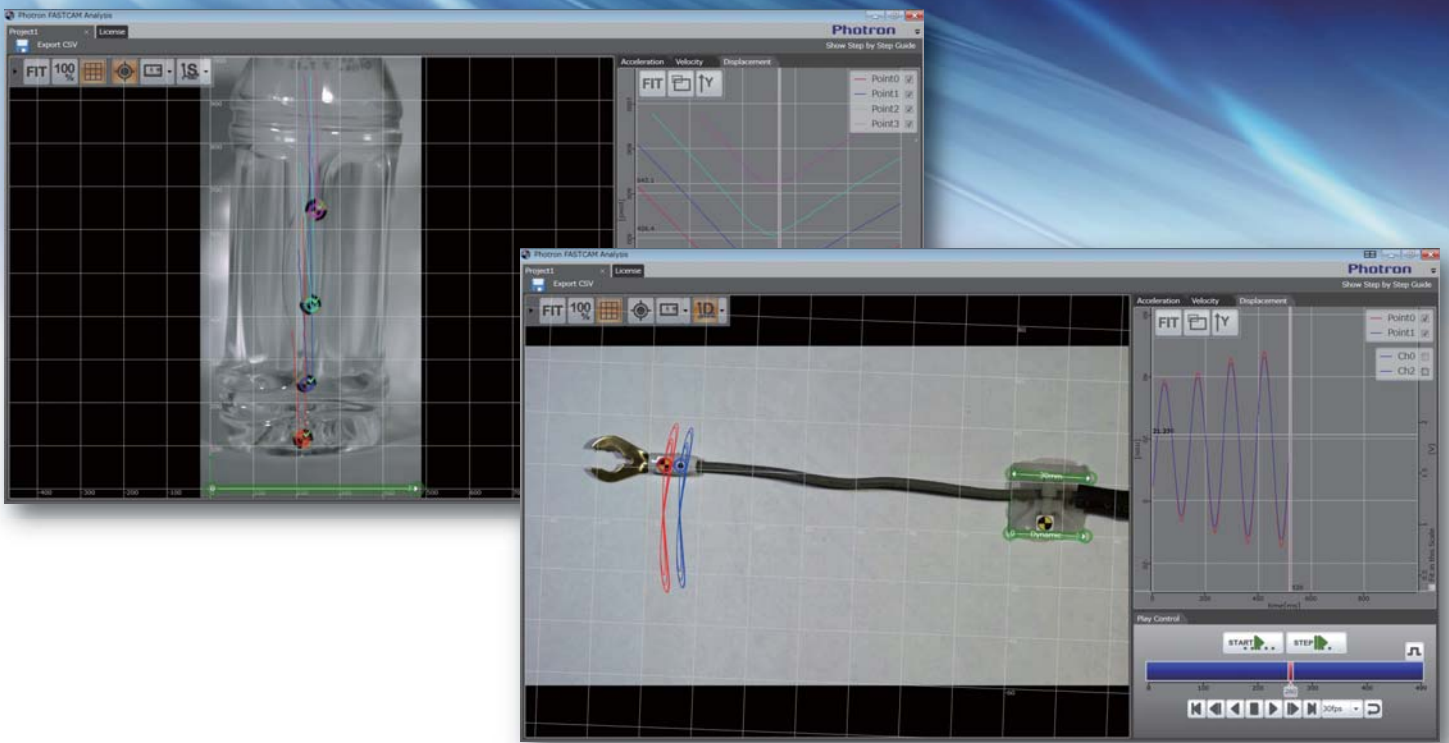


PFA – Photron FASTCAM Analysis –



PFA has been designed to be used as an assistant function for Photron FASTCAM Viewer (hereafter referred to as PFV), the camera control software for FASTCAM cameras.

With PFA, it is possible to analyze motion within an image sequence imported from PFV in order to obtain values for displacement, velocity and acceleration which can be exported to a comma separated values (csv) file. Following analysis it is possible to achieve synchronized playback of the data graphs and images.

Our vision for PFA is that it should be possible for a novice user to process an image sequence quickly and simply and without the need to evaluate several iterations of often complex analysis parameters. By successfully implementing these ideas PFA is perfect for those new to motion analysis or who require fast results.

**Dynamically
linked with PFV**

**Intuitive interface
with interactive help**

Attractive Price

Analysis Samples



Production



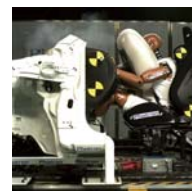
Drop Test



Mechanical Motion



Sports



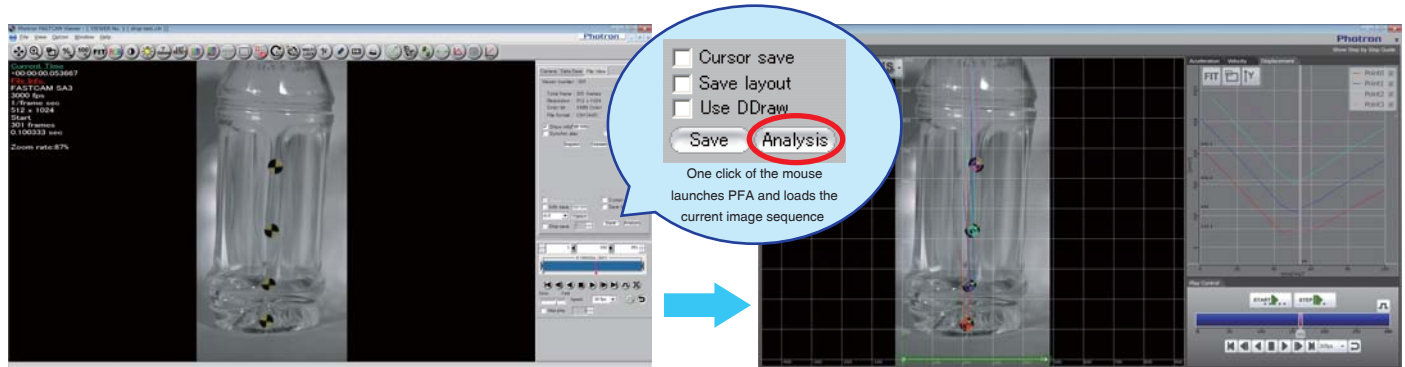
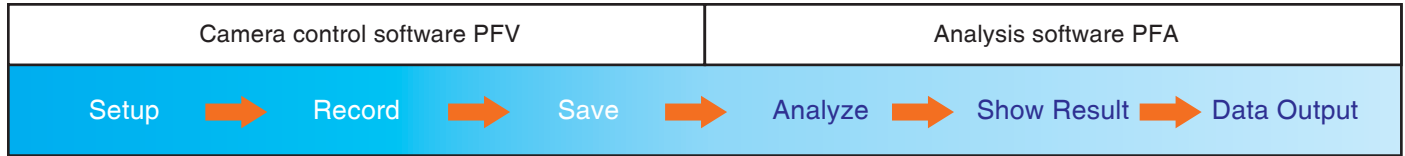
Automotive



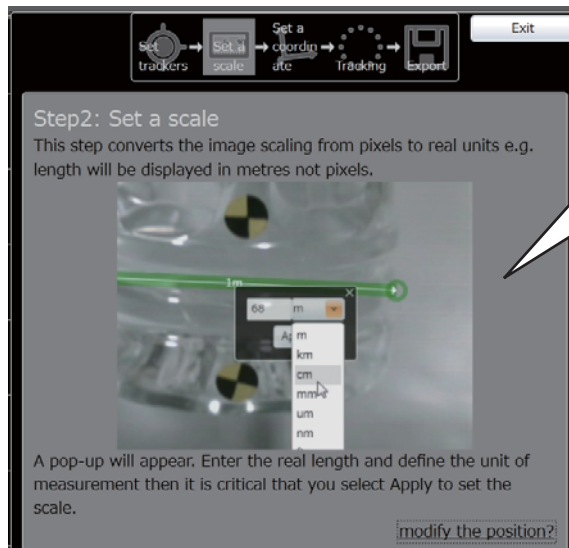
Tensile Test

■ Dynamically linked with PFV

Once image data has been saved, PFA is automatically launched thus seamlessly taking the user from image acquisition through to analysis and subsequent export of motion analysis data.



■ Analysis Made Easy with interactive help utility



PFA has a powerful interactive help guide with step-by-step instruction on how to carry out an analysis.

We recommend that first time users of PFA try this utility - select "Step by Step Guide Function" to begin.

■ Attractive Price

Taking into account its comprehensive list of functions, PFA offers exceptional value.

Purchase PFA and get more from your high-speed camera!

■ System Environments / Specifications

- | | | | |
|---|---|---|--|
| <ul style="list-style-type: none"> ■ OS <ul style="list-style-type: none"> • Windows XP SP3 • Windows Vista SP2 (64/32bit version) or later • Windows 7 (64/32bit version) ■ PFV <ul style="list-style-type: none"> • Version 3.3.5 (32-bit version) or later ■ Data input <ul style="list-style-type: none"> • The following file formats are supported: (*must have corresponding CIH file generated by PFV) • AVI, AVI2.0, BMP, TIFF, Multi-page TIFF, JPEG, RAW, RAWW, Multi-page RAW, FTIF | <ul style="list-style-type: none"> ■ Interactive Help Utility <ul style="list-style-type: none"> • An animated and interactive help utility to guide the new user through operation of PFA software. ■ Algorithm <ul style="list-style-type: none"> • Correlation tracking algorithm ■ Tracking <ul style="list-style-type: none"> • Up to 5 points (*Excluding coordinate system markers) • Edit tracking point names • Automatic and manual tracking | <ul style="list-style-type: none"> ■ Scaling <ul style="list-style-type: none"> • Image based scaling • Complete range of SI units • Static or Dynamic Coordinate System ■ Analysis results <ul style="list-style-type: none"> • Displacement, velocity, acceleration (*X axis Y axis, absolute) • Synchronized play back of image and graph data • Show coordinate grid • Fit/Zoom of Image data • CSV Data Export | <ul style="list-style-type: none"> ■ License <ul style="list-style-type: none"> • 30 day free trial • Software license linked to PC hardware |
|---|---|---|--|